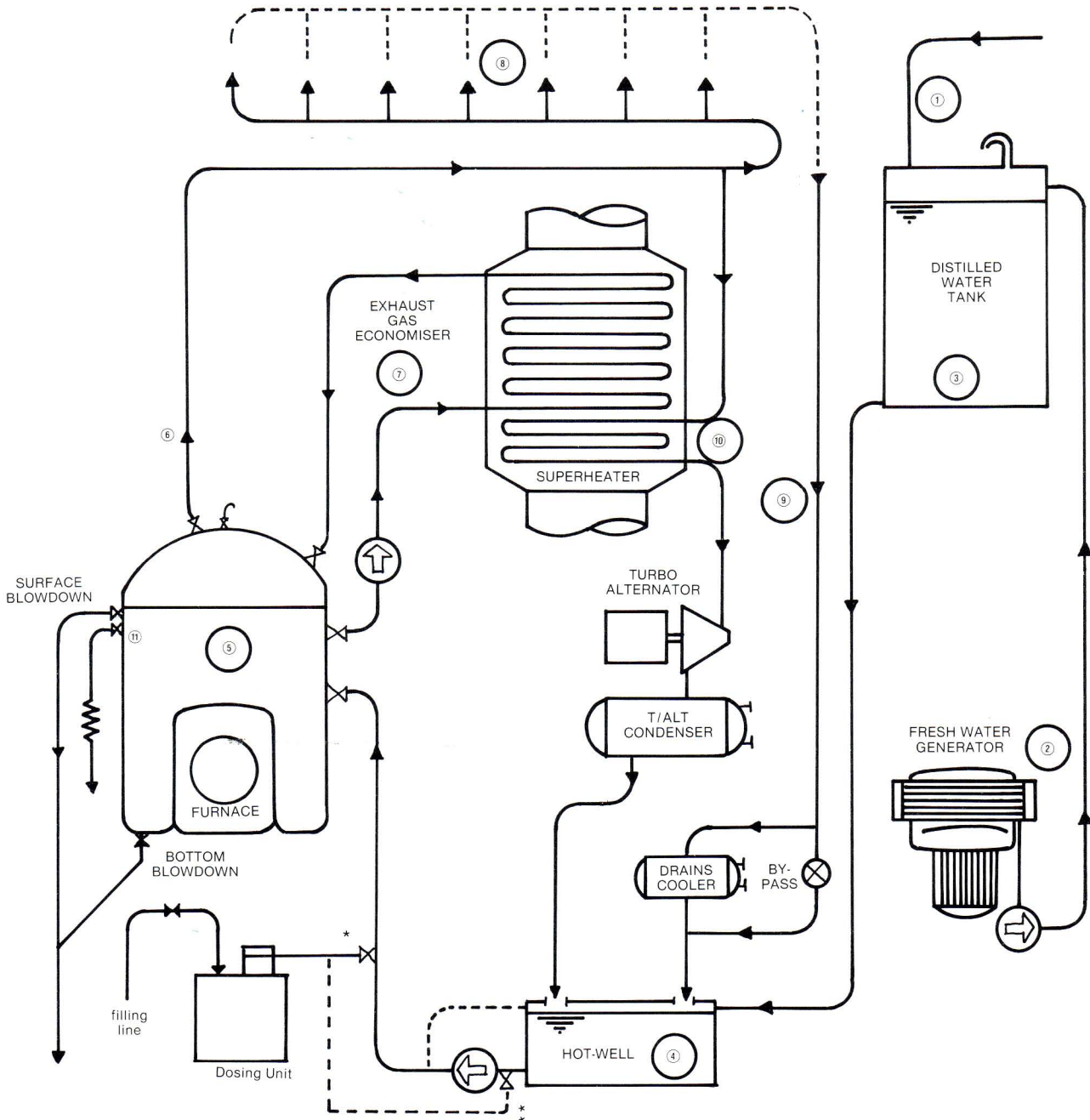


# FEED, STEAM AND CONDENSATE SYSTEMS

## Introduction

Regardless of the type of system the same basic problems occur and similar chemistry is required to obviate them.

The following diagram and key shows the source of contaminants and describes their effect on each part of the system.



\* Normal discharge point if feed system has recirculation back to Hotwell.

\*\* Alternate discharge point if pump recirculates within its casing.